

*An impressive detached marine residence occupying a commanding
seafront position*



Thorpe Bay Gardens, Thorpe Bay SS1 3NP - Asking Price; £1,400,000

Overview

Set along the prestigious Thorpe Bay seafront, this substantial detached residence enjoys a striking coastal position with uninterrupted views across the Thames Estuary. The home has been designed to maximise its setting, with principal rooms and a south-facing balcony capturing the ever-changing outlook.

The accommodation is both generous and adaptable, centred around a series of well-balanced living spaces. A formal sitting room with adjoining snug provides a more intimate setting, while the open-plan kitchen, dining and family area offers a contemporary environment suited to everyday living and entertaining. A dedicated home office and a distinctive indoor leisure pool suite further enhance the versatility of the home.

Upstairs, five bedrooms are arranged to take advantage of the elevated position, with several opening directly onto the balcony. Two en-suites and a family bathroom serve the accommodation, offering both practicality and comfort.

Externally, the property is set back behind a broad frontage with ample parking and garage facilities, while the rear garden provides a private, manageable outdoor space. To the front, the open aspect across Thorpe Bay Gardens reinforces the sense of space and position.

Thorpe Bay Garden remains one of Essex's most established addresses, with access to a range of private clubs including Thorpe Bay Yacht Club, Thorpe Bay Lawn Tennis Club and Thorpe Hall Golf Club. With direct rail connections into London and a well-served local centre, the area offers a considered balance of coastal living and accessibility.

A home defined by its setting, scale and quiet prominence—offering a rare opportunity within one of the region's most desirable seafront locations.

Entrance via: The property is approached via a low-level brick boundary wall with gated access opening onto a generous frontage. A spacious driveway provides ample off-road parking for multiple vehicles and leads directly to the garage, while the well-maintained front garden enhances the overall kerb appeal. A recessed canopied porch features a composite entrance door with obscure double-glazed inset and matching side panels, providing access to the interior.

Porch: 6'11" x 3'9" (2.1m x 1.14m) Tiled flooring. Low-level cupboard housing utility meters with a wooden plinth shelf above. Coving to a textured ceiling. A pair of bevelled-edge multi-pane glazed doors provide access to:

Grand Reception Hallway: 30'1" (9.17) > 19' (5.8) x 10'5" (3.18) (max) An impressive and spacious reception area with stairs rising to the first floor, complemented by a classic spindle balustrade. Panelled doors lead to two understairs storage cupboards, the ground floor bathroom/guest WC, living room and snug area. A series of wall light points and radiators provide both warmth and ambience. Bevelled multi-pane glazed doors open to the home office, while an attractive multi-panel internal window allows natural light to filter through from the sitting room beyond. A half-height door provides access to the kitchen. A further courtesy door gives access to the garage, currently not in use from this point as the adjoining wall within the garage is arranged as a workshop area. Finished with coving to a smooth plastered ceiling.



Sitting Room with Adjoining Snug Area: Overall 30'6" (9.3) x 15'11" (4.85) into bay

A stunning principal reception room featuring a wide bay inset with uPVC double glazed sliding patio doors and matching side windows, affording outstanding views towards the coastline and flooding the space with natural light via its south-facing aspect.

The room is complemented by wall light points, radiators, and a fireplace recess with inset cast iron-effect wood burning stove. Radiator. Coving to a smooth plastered ceiling.

Snug Area

An opening leads through to a defined snug area, ideal as a more intimate seating or reading space, adding versatility to the layout. Radiator. A high-level double glazed window to the side aspect, along with a further front-facing window, ensures continued natural light.





Impressive Kitchen/Diner: 27'6" x 17'5" (8.38m x 5.3m) To the rear, Georgian-style French doors with matching side panels and fanlight openers provide an attractive outlook and direct access to the garden. The kitchen is fitted with a comprehensive range of shaker-style eye and base level units, complemented by additional full-height larder cupboards and 'Corian' work surfaces incorporating a stainless steel one-and-a-half bowl sink unit with 'Franke' Boiling Water Tap and drainer grooves. Integrated appliances include a built-in eye-level pair of 'Neff' ovens (one fan-assisted and one steam), a split-level four-ring 'Neff' electric hob with angled extractor hood over, an under-counter integrated 'Hoover' dishwasher, a full-height fridge, and separate under-counter freezer units. Marble-effect splashback tiling completes the area. A central island/breakfast bar provides further preparation space, storage cupboards and informal seating, ideal for both everyday use and entertaining. The kitchen is finished with Amtico flooring and a smooth plastered ceiling inset with recessed LED lighting.



Dining / Family Area Open plan to the kitchen, this superb space offers clearly defined dining and seating areas, enhanced by Amtico flooring, wall light points, and a continuation of the smooth plastered ceiling with recessed lighting. A large roof lantern/skylight floods the room with natural light, creating a bright and airy environment. A further pair of uPVC double glazed doors with matching side panels and fanlight openers provide access through to the adjoining reception space.





Leisure Pool Room / Garden Room: 23'10" x 16'10" (7.26m x 5.13m)

A striking addition creating a truly unique and versatile leisure space.

Presented in a refined conservatory style, the room benefits from a vaulted polycarbonate roofline and expansive uPVC double glazed windows to three aspects, with French doors opening directly onto the garden. At its centre lies a bespoke sunken exercise pool measuring approx. 17'0 x 9'0 with counter-current jet system, perfectly suited for resistance swimming, hydrotherapy, or relaxation.

The space is finished with tiled flooring, radiator heating, wall light points and generous surrounding areas for seating or entertaining, delivering an exceptional lifestyle feature that seamlessly blends wellness, leisure, and year-round enjoyment.

Home Office: 14'9" x 9'9" (4.5m x 2.97m) A large double glazed sliding patio door provides direct access and pleasant views over the rear garden. The room features a fitted recessed book shelf, radiator and coving to textured ceiling.



Ground Floor Bathroom / Guest WC: 10'1" x 7'9" (3.07m x 2.36m) Obscure double glazed window to the side aspect. A generously sized five-piece ground floor bathroom fitted with a modern white suite comprising a tiled panelled bath with mixer tap and handheld shower attachment, separate glazed shower enclosure with integrated shower unit, wall-mounted wash hand basin with vanity storage beneath and mixer tap over, wall-mounted mirror with vanity lighting, low-level dual flush WC and bidet. Finished with full-height tiling, with shower boarding to the enclosure area, complemented by wood-effect flooring, shaver point, radiator and wall-mounted extractor. Smooth plastered ceiling inset with recessed lighting.

Landing: 24'10" x 10'5" (max) (7.57m x 3.18m (max)) A spacious and well-presented first floor landing featuring a turned spindle balustrade overlooking the stairwell. Large double glazed window to the rear aspect. Pair of doors to recessed airing cupboard. Radiator. Smooth plastered ceiling with central light fitting, access to loft space and doors leading to all first floor accommodation.



Main Bedroom: 15'6" (4.72) x 14'5" (4.4) (excluding wardrobes) A generously proportioned double bedroom featuring a large double glazed window to the rear aspect. The room benefits from a comprehensive range of fitted wardrobes spanning one wall, offering ample hanging and storage space. Further features include a radiator, wall light points and coving to textured ceiling. Door provides access to;

Ensuite Bathroom: 9'2" x 8'3" (2.8m x 2.51m) Obscure double glazed window to side aspect. A spacious and well-appointed en-suite fitted with a modern suite comprising a tiled enclosed bath with wall-mounted mixer taps, a low level dual flush concealed cistern WC, bidet, and a contemporary wall-mounted vanity unit incorporating a double-width wash hand basin with mixer taps over and storage beneath. The room is fully tiled to both walls and floor and further benefits from a heated towel rail, wall-mounted extractor fan, shaver point and wall-mounted mirror. Finished with a smooth plastered ceiling inset with recessed lighting.



Bedroom Two / Guest Suite: 22'1" x 10'11" (max) (6.73m x 3.33m (max))

A well-proportioned double bedroom featuring a uPVC double glazed window to the rear aspect, enjoying far-reaching views towards the Thames Estuary. Built-in two-door 'slide-a-robe' wardrobe providing excellent storage. The room further benefits from a radiator and wall light points. Finished with coving to a smooth plastered ceiling. Panelled door to:

Ensuite Bathroom: A spacious bathroom fitted with a modern white suite comprising a panelled bath with mixer taps and shower attachment with glazed shower screen, low level WC, bidet and a vanity unit incorporating a wash hand basin with storage beneath. The room is fully tiled to both walls and floor, complemented by a decorative mosaic border. Further features include an obscure uPVC double glazed window providing natural light, wall-mounted mirror with lighting, extractor fan and smooth plastered ceiling with inset spotlights.



Bedroom Three / First Floor Sitting Room: 15' x 3'3" (4.57m x 1m) A generous and versatile room, currently arranged as an additional sitting room, enjoying outstanding elevated views across the Thames Estuary. Large sliding patio doors open onto a balcony, creating a seamless connection to the outside and allowing an abundance of natural light to fill the space. Wall light points, radiator and finished with coving to a textured ceiling. The elevated position affords a constantly changing coastal outlook, with far-reaching water views and a pleasant open aspect, making this an ideal bedroom or additional reception.



Bedroom Four: 12'9" x 9'3" (3.89m x 2.82m) A south-facing bedroom enjoying a front-facing aspect with attractive views towards the Thames Estuary. A large window and glazed door provide direct access onto the balcony, enhancing the sense of space and natural light while offering a pleasant outlook. Wall light points and a radiator provide comfort and practicality. A louvred door opens to a recessed wardrobe, offering useful hanging space and shelving. A fitted wash hand basin adds further convenience, making the room well-suited for guests or independent use. Coving to textured ceiling.

Bedroom Five: 12'7" (3.84) > 10' (3.05) x 9'3" (2.82) A further south-facing bedroom positioned to the front of the property, enjoying a pleasant waterfront outlook with views towards the Kent coastline. A large window and glazed door provide direct access onto the balcony, allowing for excellent natural light and a seamless connection to the outside space. Wall light points. A recessed wardrobe with louvred door provides useful hanging space and shelving. Coving to textured ceiling.



South-Facing Sea View Balcony: A generous balcony extending across the front (south-facing) elevation, accessed from Bedrooms Three, Four and Five. Commanding elevated, uninterrupted views across the waterfront and towards the Kent coastline, the space provides an exceptional setting for seating and outdoor relaxation. Finished with a contemporary glass balustrade with stainless steel detailing.

Positioned directly opposite Thorpe Bay Gardens and the seafront beyond, the property benefits from an open, green outlook to the front, enhancing the sense of space and coastal setting.



Family Shower Suite: 10'9" x 6'1" (3.28m x 1.85m) A spacious and well-presented bathroom fitted with a modern white suite comprising a triple-width walk-in shower enclosure with glazed screen and integrated shower unit, wash hand basin with mixer tap set within a wooden vanity unit providing useful storage and integrated towel rail, concealed cistern low-level dual flush WC and bidet. The room is fully tiled in neutral tones, complemented by tiled flooring.

Additional features include a heated towel rail, wall-mounted illuminated mirror, and an obscure double glazed window to the side aspect, allowing for natural light while maintaining privacy. Practical storage is incorporated within the vanity unit, and the layout is designed for everyday ease and functionality. Finished with a smooth plastered ceiling inset with recessed lighting.

To the Outside of the Property: To the rear, the garden is mainly laid to lawn and enjoys a good degree of privacy, enclosed by established boundaries. There is a patio area adjoining the house, ideal for outdoor seating and entertaining, along with a conservatory opening directly onto the garden. The overall plot offers excellent space for family use, with scope for further landscaping if desired.



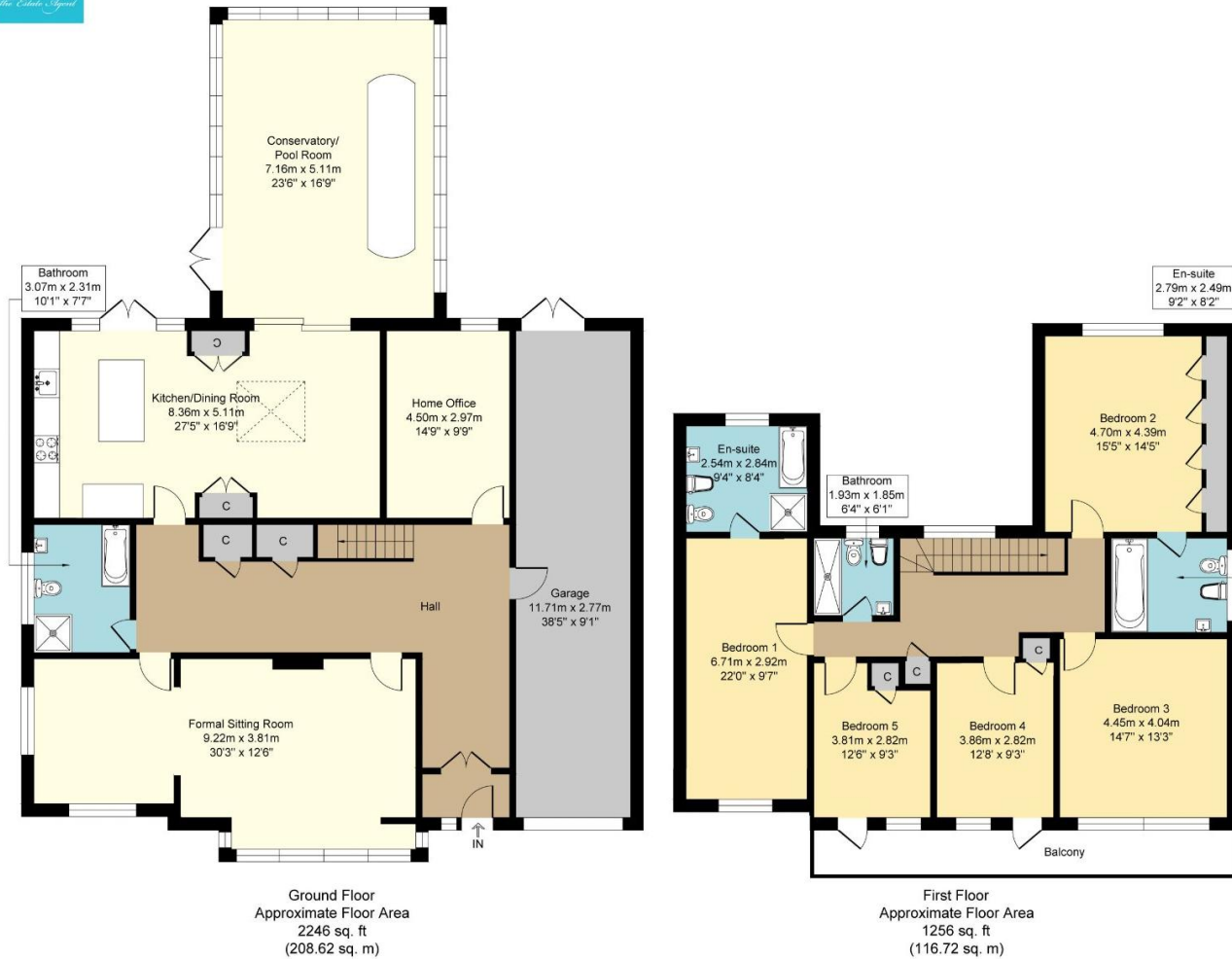
Garage & Pool Plant: 38.5 x 9.1

The garage is accessed via an up-and-over door and provides useful storage space. It houses the boiler serving the swimming pool. In addition, there is a separate external pump room accommodating the pool filtration equipment.

Council Tax Band H

PRELIMINARY DETAILS - AWAITING VERIFICATION

Thorpe Bay Gardens



THE PROPERTY MISDESCRIPTIONS ACT 1991 The Agent has not tested any apparatus, equipment, fixtures and fittings or services and so cannot verify that they are in working order or fit for the purpose. A Buyer is advised to obtain verification from their Solicitor or Surveyor. References to the Tenure of a Property are based on information supplied by the Seller. The Agent has not had sight of the title documents. A Buyer is advised to obtain verification from their Solicitor. Items shown in photographs are NOT included unless specifically mentioned within the sales particulars. They may however be available by separate negotiation. Buyers must check the availability of any property and make an appointment to view before embarking on any journey to see a property.

