

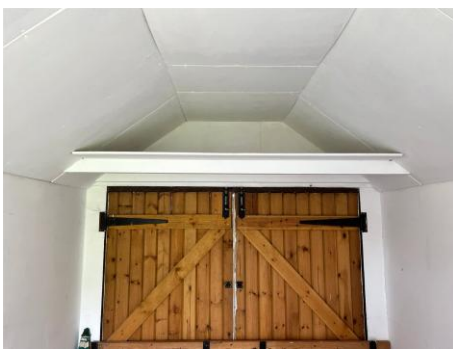
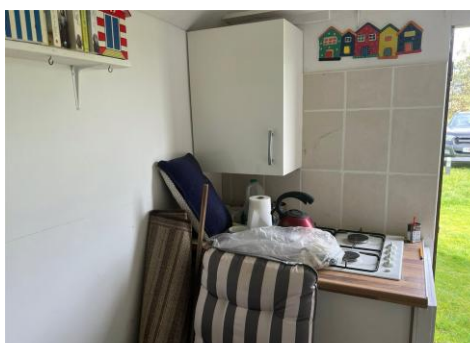
# HUNT ROCHE

*The Estate Agent*



**Asking Price: £60,000**

Beach Hut, 478 Beach Hut, Shoebury Common Road, Shoeburyness, SS3 9HG



**\*\* SUMMER AT THE BEACH \*\*** A delightful beach hut in a picturesque location is now available. Ideally close to Uncle Tom's Cabin, parking, and public conveniences, this hut on the promenade offers stunning Thames Estuary views. A beloved retreat for the current owners, it's perfect for enjoying the waterfront's beauty. Must view!



**Overview:**

Approached via a pair of doors, the hut measures approx 11'1 x 6'6.

To the rear, there is a fitted kitchenette area inset with hob with storage cupboards under. Further overhead storage space to either end.

Further door to the rear of the Hut opening to the Parking area and Green.

The seller, as per information provided to Hunt Roche, is willing to leave all items within the beach hut for any interested parties.

With its combination of seaside views, meticulous maintenance, and proximity to amenities, this beach hut becomes an appealing choice for individuals or families seeking a delightful beachside retreat.

**Agents Notes:**

The Beach hut is leasehold with a yearly charge of £300.

We have been informed that a annual parking permit can be obtained from the council as the green area on the lead up to the beach huts is 'pay and display'. Water tap nearby.

- Located on the 'iconic' Shoebury Common Promenade, is this lovely Beach Hut with stunning views of the beach and the Thames Estuary.
- The beach hut features a fitted kitchenette area with storage cupboard and hob
- The renowned Uncle Tom's Cabin is closeby, along with amenities such as car parking (permit or pay & display), public toilets which add to the overall convenience.
- Considering its well-loved history, stunning views, and practical features, this beach hut is highly recommended for anyone seeking a delightful and well-equipped coastal retreat for summer days.

**THE PROPERTY MISDESCRIPTIONS ACT 1991** The Agent has not tested any apparatus, equipment, fixtures and fittings or services and so cannot verify that they are in working order or fit for the purpose. A Buyer is advised to obtain verification from their Solicitor or Surveyor. References to the Tenure of a Property are based on information supplied by the Seller. The Agent has not had sight of the title documents. A Buyer is advised to obtain verification from their Solicitor. Items shown in photographs are NOT included unless specifically mentioned within the sales particulars. They may however be available by separate negotiation. Buyers must check the availability of any property and make an appointment to view before embarking on any journey to see a property. 9/8/2025